

K 42211



e:nergycarbon
energy efficient ceiling heating



Ceiling heating with putty

System E-ENERGY CARBON FLEECE

1 Deckenbelag

2 Putty / plaster system min 2 mm

3 E-ENERGY CARBON FLEECE

4 Putty / adhesive

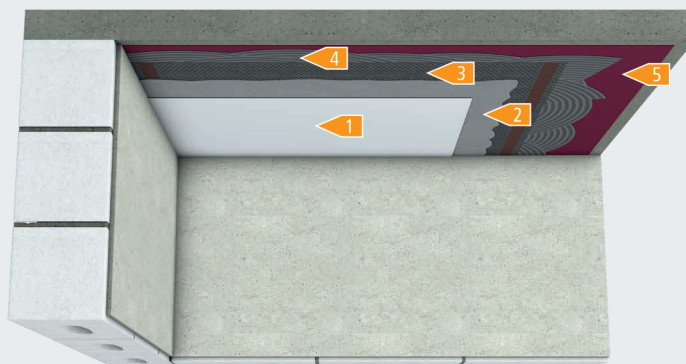
5 Primer

2 mm

0.4 mm

2 mm

5 mm



Without additional thermal insulation



–

No thermal insulation available



~ 8 kg / m²

Without ceiling covering



Prepare level, clean, load-bearing substrate. Dry construction boards and wood-based panels must be crack-bridging in the joint area



For adhesive and product recommendations see material approvals



If an internal thermal insulation is laid on the ceiling against unheated rooms (attic) or outside air temperature (roof), a dew point calculation must be carried out. The manufacturer's specifications must be observed.



The technical values are indicative and depend on the manufacturer and the used materials can vary. The manufacturer's instructions and generally accepted rules of technology must always be observed.



Product data sheet: P40000