



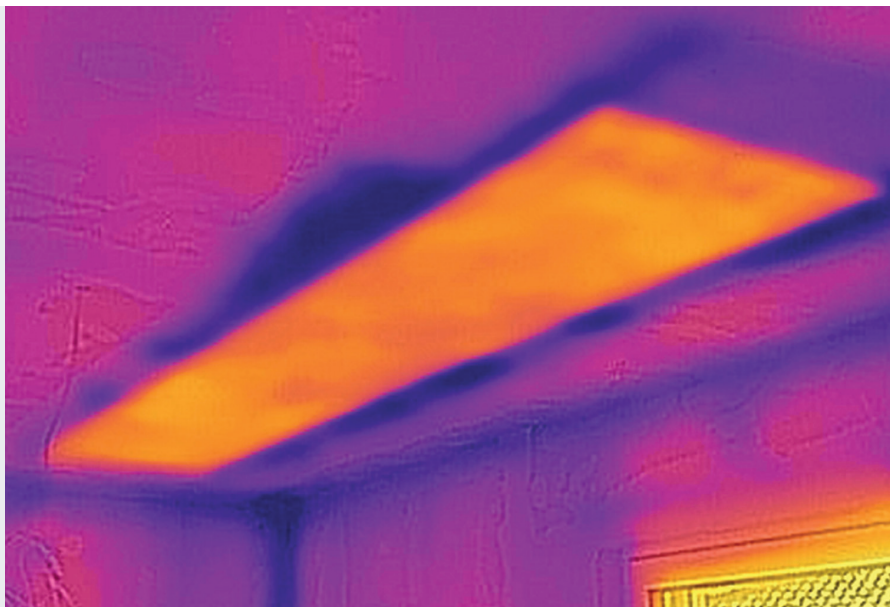
Ceiling heating

System E-ENERGY CARBON FLEECE

New construction of a prefabricated house in 9010 Carinthia.

In a newly built prefabricated house in Carinthia, a total of 30 m² of heating foil was installed in the ceiling as additional heating. The **E-ENERGY CARBON FLEECE** system was used.

Ceiling plaster	Fine putty
Surface heating	E-ENERGY CARBON FLEECE
Surface	120 m ²
Area	2 floors / 6 rooms



Construction

- 1 Ceiling
- 2 Putty
- 3 E-ENERGY CARBON FLEECE
- 4 Fine putty

- 1 mm
- 0,4 mm
- 2 mm
- 4 mm

